

**Strong body of clinical evidence using PASCAL Pattern Scanning Laser Treatment in 532 nm and 577 nm wavelengths --more than 20 peer-reviewed clinical articles.**

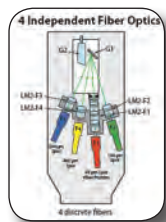
**Affordable pricing competitive to single spot lasers.**

**PASCAL method delivers increased patient comfort during treatment with exposure durations down to 10 ms.**



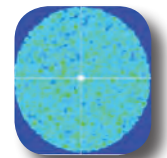
### Rapid pattern-scanning laser delivery

- A full PRP can be completed in just one treatment session freeing up a physicians' schedule to see more patients.
- Less patient and Doctor fatigue during any photocoagulation procedure.



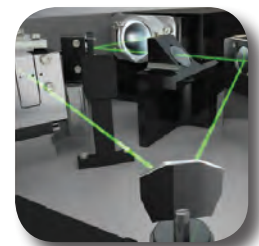
### Four fiber beam delivery:

- Maintains a long and constant depth of focus for all spot sizes
- Offers a safer, easier to use platform when compared to other pattern scanning technologies.
- Guaranteed sharp edges for every spot with no hot spots within the laser lesions



### Three high speed galvanometers allow for:

- Precise spot placements within each and every treatment pattern
- Fastest pattern treatment available with < 1ms interval between pulses



**Multi-functional. PASCAL lasers can treat both retinal and glaucoma disorders**



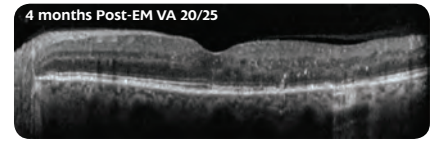
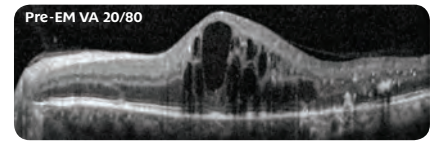
SYNTHESIS™



STREAMLINE

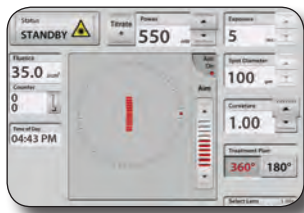
## Photo-thermal stimulating Endpoint Management™ Technology

- Provides freedom to treat closer to the fovea without fear of causing retinal damage or vision loss.
- Allows for greater physician flexibility and control in providing therapeutically effective, vision-sparing treatment of retinal disease.
- Superior to Micropulse technology due to Landmark Patterns providing visible indicators of the treated region and "one setting" interface.



Photos courtesy of Dr. Daniel Lavinsky.

## PLT\* (Patterned Laser Trabeculoplasty) for Glaucoma



- Minimally traumatic computer-guided therapy for Laser Trabeculoplasty
- Successfully reduces IOP without scarring and burns
- Auto advance feature increases speed and accuracy of treatment

\*Not yet available in the US.

## Unique PASCAL features to simplify procedures and save time



- Intuitive touch screen that provide physicians with easy access to patterns and control of power



- 3-D Remote Control



- Printed reporting to easily log patient data and treatment parameters